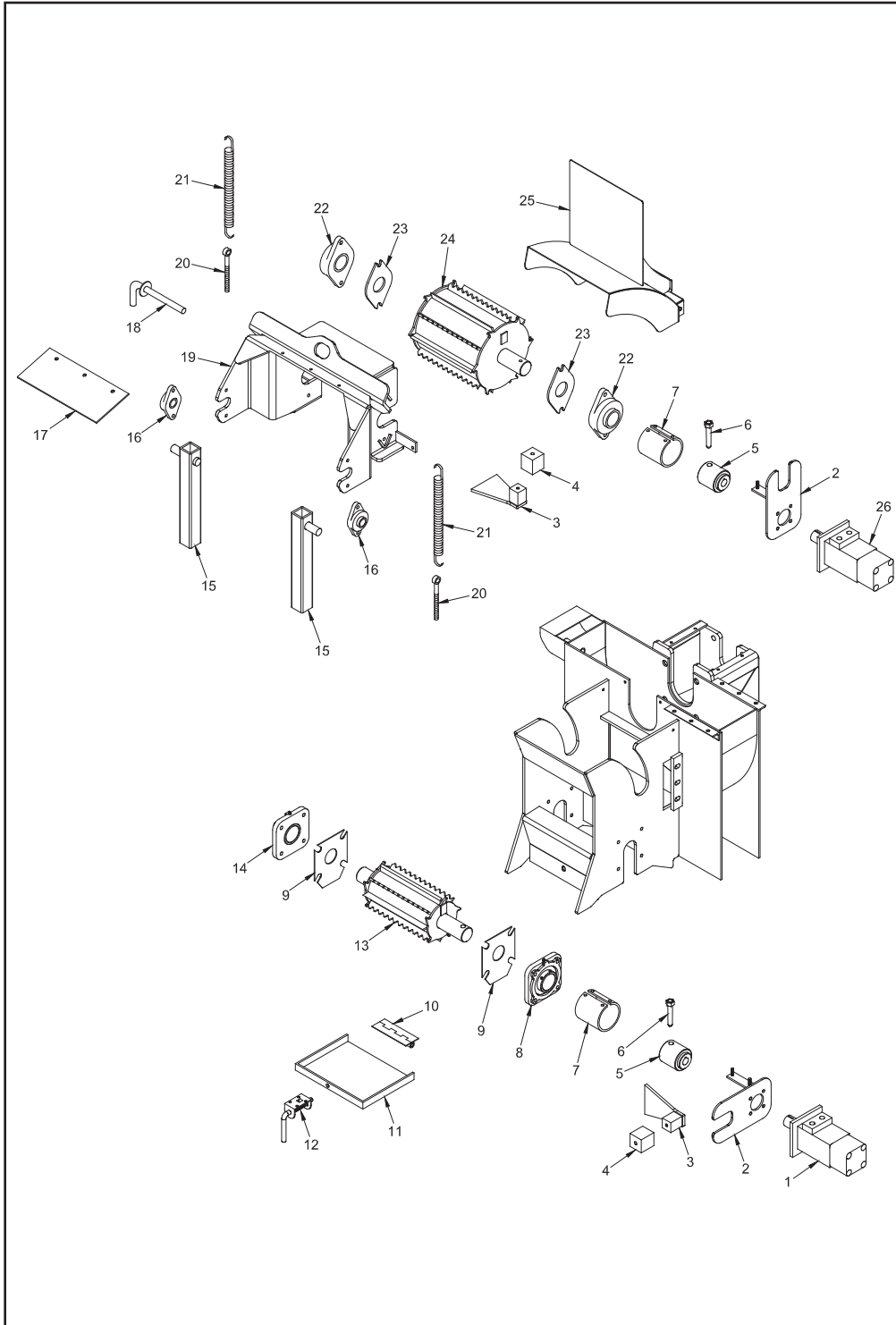


NOTICE Parts may not be exactly as shown.

MODEL 75**INFEEED HOPPER COMPONENTS**

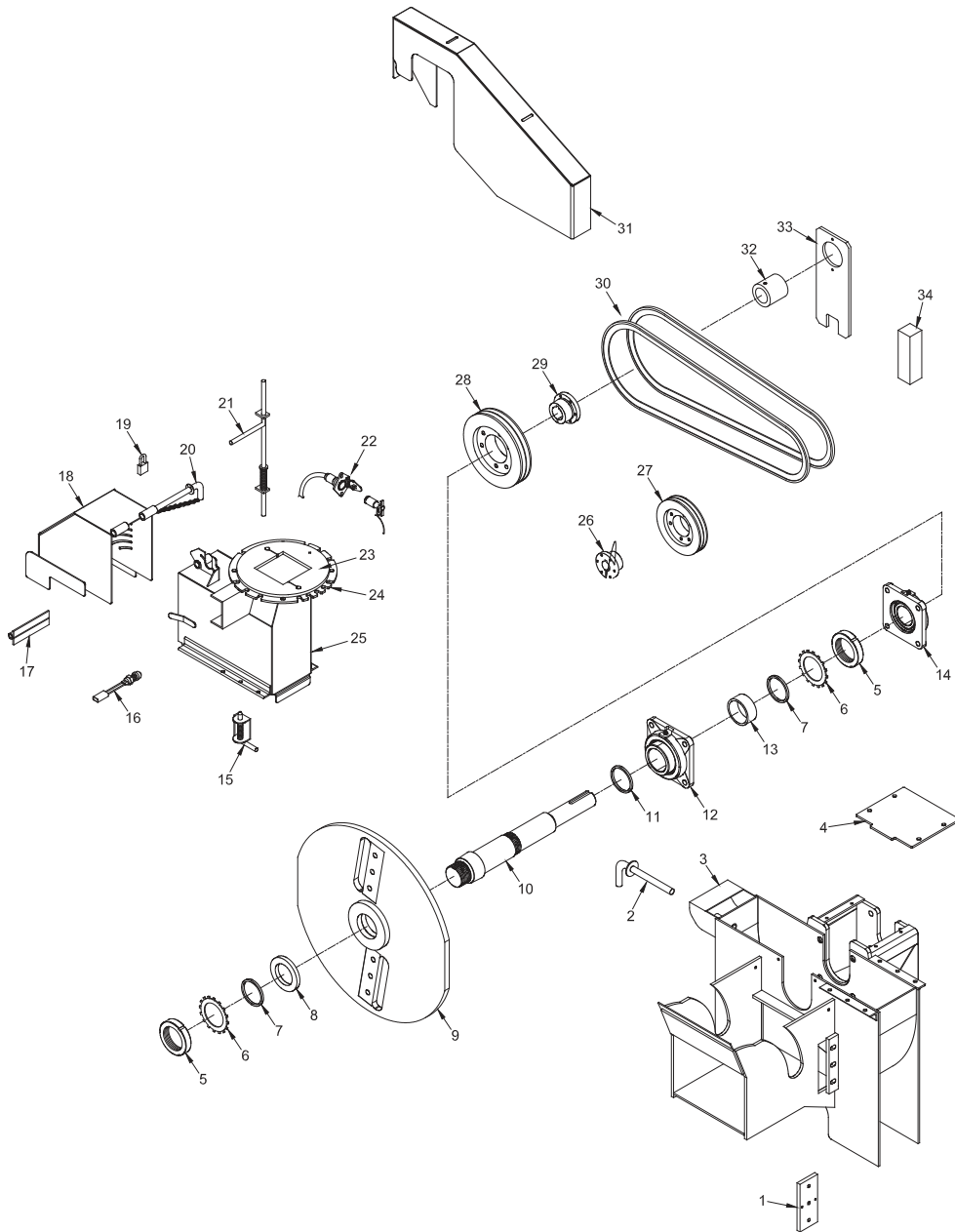
LOCATION	PART NUMBER	DESCRIPTION
1.	626-200019	Folding Pan for Infeed Hopper
2 a.	900-4901-83	Folding Pan Spring Lock & Trap Door Lock
b.	900-7900-93	Black Rubber Cap (Not Shown)
3 a.	955-1003-94	Folding Pan Lock Pin
b.	900-7900-96	Rubber Cap (Not Shown)
4.	900-4900-44	Pivot Pin Jam Nuts
5.	980-0133-09	Pivot Tube
6.	626-300001	Pivot Pin
7.	626-200020	Control Handle
8.	626-300195	Lock Tab for Folding Pan
9 a.	900-9902-72	Manual Holder - 11" x 14-1/2" x 2"
b.	900-9910-28	Manual Holder - 8" x 11" x 2"
10.	626-0000-52	Wooden Push Paddle
11.	900-4914-18	Plastic Knob For Wooden Push Paddle
12 a.	980-0508-64	Last Chance Cable Assembly
b.	900-4904-29	Last Chance Orange Cable & Clamp
13.	626-0001-80	Hydraulic Control Arm
14.	980-100141	Feedwheel Control Valve Linkage
15.	907-2000-05	Yoke Pivot Pin Assembly
16.	900-1901-08	Yoke Pivot Bearing
17.	900-7901-69	Top Feedwheel Guard Flap
18.	626-300068	Yoke Lock Pin
19.	907-2000-04	Top Yoke Assembly
20.	900-4905-43	Yoke Spring Adjuster
21.	900-4915-82	Yoke Spring
22 a.	900-1904-14	Feedwheel Bearing
b.	900-4913-62	Feedwheel Bearing Bolt (1/2"-13NC x 1-1/8" SHCS)
23.	986-1110-77	Feedwheel Bearing Backer (Optional)
24 a.	626-200014	Feedwheel Assembly
b.	626-300132	Feedwheel Tooth - Knife Edge
c.	626-300134	Feedwheel Tooth - Serrated
d.	626-100068	Feedwheel Shaft & Coupler Assembly
25.	907-2000-16	Top Feedwheel Cover
26.	900-7901-23	Rubber Coupler Guard - 17 3/4"
27.	900-4909-53	Taper Pin With Nut
28.	626-300268	Coupler With Motor Nut and Taper Pin With Nut
29 a.	980-0124-98	Feedwheel Torque Arm
b.	980-0508-57	Coupler Guard Mount
30.	900-3927-67	Feedwheel Hydraulic Motor (Tapered Shaft)
31.	937-900009	Torque Arm Cushion
32 a.	907-3000-41	Torque Arm Stop
b.	937-300316	Torque Arm Cushion Mount
33.	626-200009	Infeed Hopper Assembly



NOTICE Parts may not be exactly as shown.

MODEL 75**DUAL FEEDWHEEL COMPONENTS**

LOCATION	PART NUMBER	DESCRIPTION
1.	900-3944-21	Bottom Feedwheel Hydraulic Motor
2 a.	980-0124-98	Feedwheel Torque Arm
b.	980-0508-57	Coupler Guard Mount
3 a.	980-300515	Torque Arm Stop
b.	937-300316	Torque Arm Cushion Mount
4.	937-900009	Torque Arm Cushion
5.	626-300268	Coupler With Motor Nut and Taper Pin With Nut
6.	900-4909-53	Taper Pin With Nut
7.	900-7901-23	Rubber Coupler Guard - 17 3/4"
8 a.	900-1909-80	Bottom Feedwheel Bearing - Curb Side (Grip-Tight Style)
b.	900-4909-23	Bottom Feedwheel Bearing Bolt
9.	980-300082	Bottom Feedwheel Bearing Backer Plate
10.	981-1000-60	Trap Door Hinge
11.	626-2001-19	Trap Door Assembly
12 a.	900-4901-83	Trap Door Spring Lock
b.	900-7900-93	Black Rubber Cap (Not Shown)
13 a.	626-200036	Bottom Feedwheel Assembly
b.	626-300132	Bottom Feedwheel Tooth - Knife Edge
c.	626-300134	Bottom Feedwheel Tooth - Serrated
d.	626-100068	Bottom Feedwheel Shaft and Coupler Assembly
14 a.	900-1909-79	Bottom Feedwheel Bearing - Road Side (Set Screw Style)
b.	900-4909-23	Bottom Feedwheel Bearing Bolt (1/2"-13NC x 1-1/4" SHCS)
15.	907-2000-05	Yoke Pivot Pin Assembly
16.	900-1901-08	Yoke Pivot Bearing
17.	900-7901-69	Top Feedwheel Guard Flap
18.	626-300068	Yoke Lock Pin
19.	907-2000-04	Top Yoke Assembly
20.	900-4905-43	Yoke Spring Adjuster
21.	900-4915-82	Yoke Spring
22 a.	900-1904-14	Top Feedwheel Bearing
b.	900-4913-62	Top Feedwheel Bearing Bolt (1/2"-13NC x 1-1/8" SHCS)
23.	986-1110-77	Top Feedwheel Bearing Backer (Optional)
24 a.	626-200014	Top Feedwheel Assembly
b.	626-300132	Top Feedwheel Tooth - Knife Edge
c.	626-300134	Top Feedwheel Tooth - Serrated
d.	626-100068	Top Feedwheel Shaft & Coupler Assembly
25.	907-2000-16	Top Feedwheel Cover
26.	900-3927-67	Top Feedwheel Hydraulic Motor

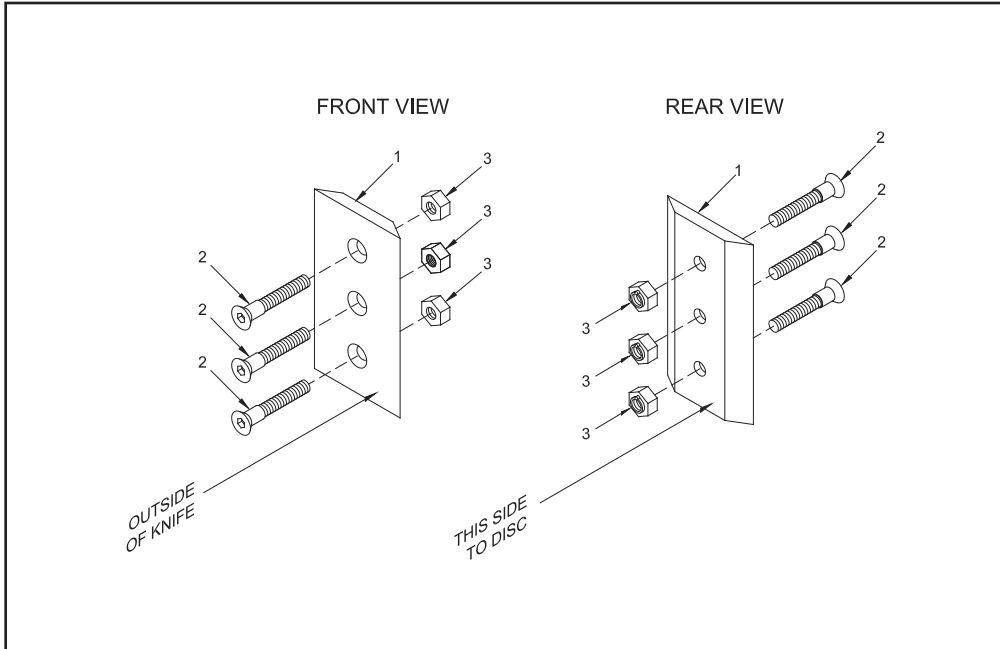


MODEL 75**CHIPPER COMPONENTS**

LOCATION	PART NUMBER	DESCRIPTION
1.	See Page 87	4 Sided Anvil Assembly
2.	626-300068	Chipper Disc Lock Pin
3.	626-300048	Hood Stop
4.	907-3000-30	Cover Plate Over Chipper Shaft
5.	900-4915-83	Shaft Lock Nut
6.	900-4915-84	Shaft Lock Nut Tang Washer
7.	907-3000-46	Shaft Lock Spacer Ring
8.	907-3000-25	Disc Draw Nut Washer
9 a.	907-2000-08	2-Knife Disc With Shaft, Fan Blades, Knives, & Hardware
b.	907-2000-03	2-Knife Disc With Out Shaft
c.	626-300084	Chipper Disc Lock Tube On Disc (Not Shown)
10.	907-3000-03	Chipper Disc Shaft
11 a.	955-300298	1/16" Disc Spacer
b.	955-1002-66	1/8" Disc Spacer
c.	955-1002-67	3/16" Disc Spacer
d.	955-1002-68	1/4" Disc Spacer
12 a.	900-1904-41	Front Chipper Bearing
b.	900-4907-14	Front Bearing Bolt
c.	900-4903-41	Front Bearing Hex Nut
d.	900-4907-17	Front Bearing Lock Washer
e.	900-4901-47	Front Bearing Flat Washer
13.	907-3000-44	Disc Lock Collar
14 a.	900-1903-30	Rear Chipper Bearing
b.	900-4911-10	Rear Bearing Bolt
c.	900-4907-04	Rear Bearing Hex Nut
d.	900-4906-87	Rear Bearing Lock Washer
e.	900-4907-10	Rear Bearing Flat Washer
15 a.	900-4901-83	Discharge Spring Lock
b.	900-7900-93	Black Rubber Cap (Not Shown)
16.	626-100030	Engine Disable Plug Kit - Kohler Only
17.	626-300099	Chipper Hood Hinge
18.	626-200006	Chipper Hood Hinged Half
19 a.	900-4902-20	Padlock for Hood Pin (Not Shown)
b.	P812	Key for Padlock (Not Shown)
20.	626-100068	Hood Pin With Attaching Chain
21 a.	626-100059	Spring Lock For Hood Pin
b.	900-7900-92	Black Rubber Cap (Not Shown)
22 a.	626-100064	Engine Disable Plug Kit (Includes Hood Pin & Mounts)
b.	900-2904-13	6-Prong Female Plug Only
c.	980-100083	6-Prong Male Plug Only With Wire Loop & Crimp Sleeves
23.	626-300106	Hood Flange
24 a.	626-300401	Bottom Swivel Ring for Manual Swivel Discharge
b.	626-300401	Bottom Swivel Ring for Hand Crank Swivel Discharge
25.	626-200007	Chipper Hood Stationary Half
26.	**	Engine Sheave Bushing
27.	**	Engine Sheave
28.	**	Chipper Sheave
29.	**	Chipper Sheave Bushing
30.	**	Chipper Belt
31.	907-2000-10	Belt Shield
32.	926-1000-58	Hydraulic Pump Coupler
33.	626-0004-09	Hydraulic Pump Torque Arm
34.	907-2000-11	Hydraulic Pump Torque Arm Stop

** Components vary with engine options order by physical description or machine S/N.

NOTICE Nuts, bolts, washers, and all other components can be ordered by physical description.



NOTICE KNIFE BOLTS MUST BE INSTALLED THROUGH KNIFE AND ESPECIALLY KNIFE NUT AS SHOWN.

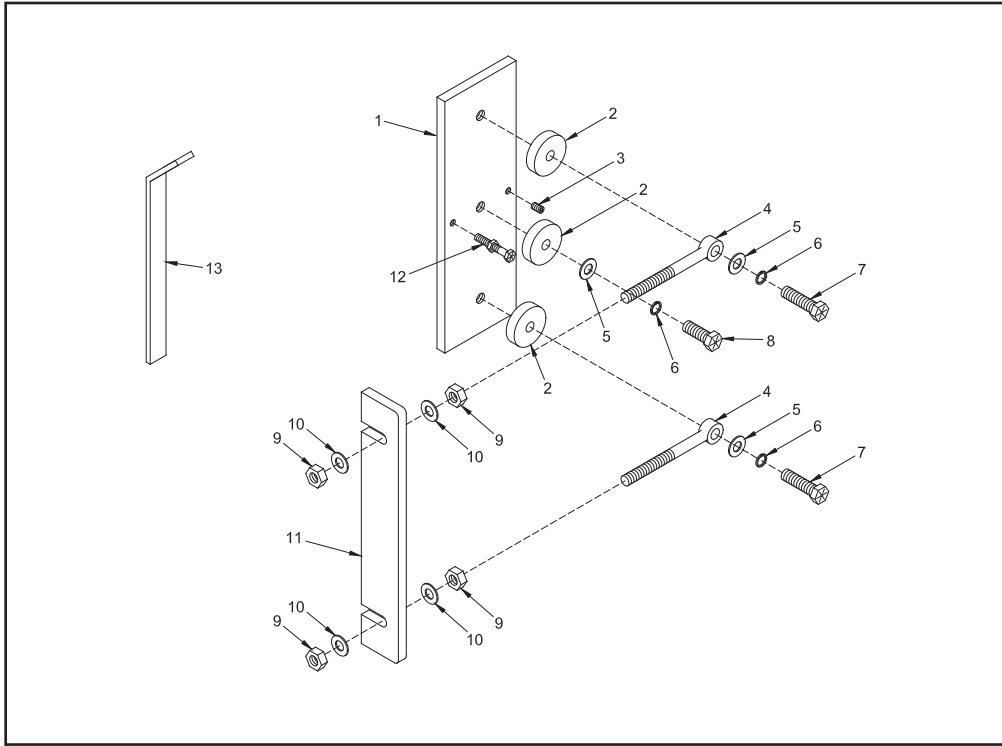
Part Numbers For Knives & Hardware

LOCATION	PART NUMBER	DESCRIPTION
1.	900-9904-43	1/2" x 4" x 8 3/8" Chipper Knife
2.	900-4912-43	5/8"-11NC x 2 1/4" Chipper Knife Bolt (180 ft-lbs or 245 Nm of Torque)
3.	900-4903-93	5/8"-11NC Chipper Knife Nut

Part Numbers For Miscellaneous Knife Parts

LOCATION	PART NUMBER	DESCRIPTION
4.	900-9901-68	Knife Saver Kit (Not Shown)
5.	900-9901-65	File For Knife Saver Kit Only (Not Shown)
6.	900-9901-63	Replacement Blades For Knife Saver (Not Shown)

NOTICE Parts may not be exactly as shown.

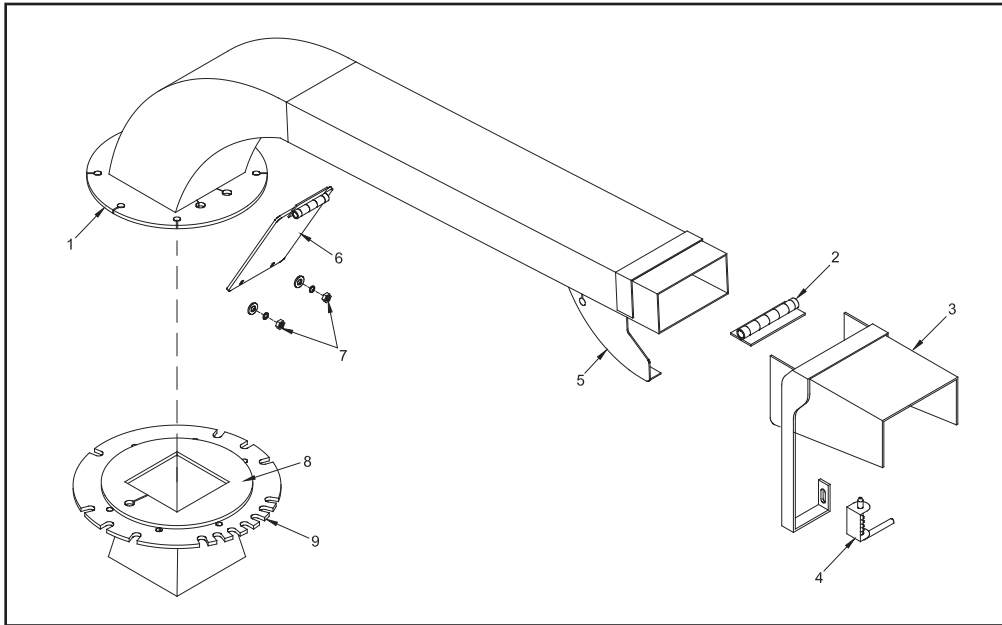


LOCATION	PART NUMBER	DESCRIPTION
1 a.	907-3000-09	Anvil Only - 4 Sided
1 b.	907-3000-45	"AR" Anvil Only - 4 Sided
2.	900-4902-63	Anvil Washer
3.	900-4903-54	5/16"-18NC x 1/2" Set Screw
4.	900-4905-43	Anvil Eye Bolt - 1/2"-13NC x 3 1/2"
5.	900-4906-88	1/2" Flat Washer
6.	900-4900-31	1/2" High Collar Lock Washer
7.	900-4900-74	1/2"-13NC x 2" Hex Head Bolt
8.	900-4906-72	1/2"-13NC x 1 1/2" Hex Head Bolt
9.	900-4906-82	1/2"-13NC Hex Nut
10.	900-4906-90	1/2" USS Flat Washer
11.	626-300095	Anvil Puller Block
12 a.	900-4906-41	5/16"-18NC x 2" Hex Head Bolt
12 b.	900-4910-73	5/16"-18NC Hex Nut
13.	981-1006-16	Anvil Gauge
14.	626-0500-77	Anvil Hardware Only (Includes 2 Through 10, & 12)
15.	907-2000-07	Anvil and Hardware Kit (Includes 1a Through 10, & 12)

Anvil Bolt Torque: 65-75 ft.-lbs. (88-102 Nm)

NOTICE Parts may not be exactly as shown.

STANDARD DISCHARGE



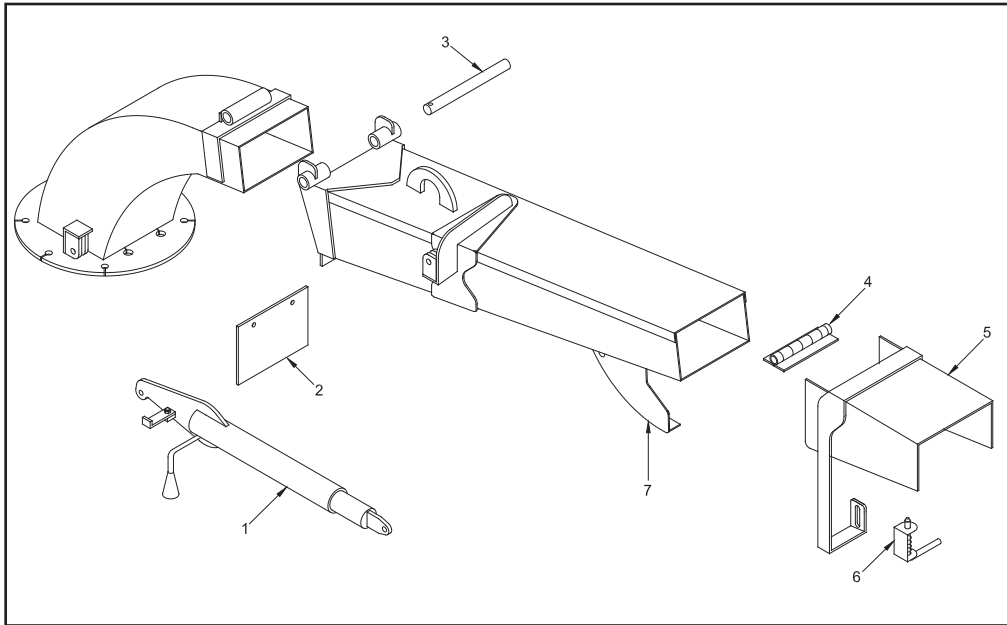
LOCATION	PART NUMBER	DESCRIPTION
1.	626-300108	Discharge Bottom Swivel Ring
2.	626-300114	Discharge Flipper Hinge
3 a.	626-200037	12" Discharge Flipper Assembly (Includes 2 & 4)
b.	626-200038	12" Enclosed Discharge Flipper Assembly (Includes 2 & 4)
4 a.	900-4901-83	Discharge Flipper Adjusting Spring
b.	900-7900-93	Black Rubber Cap (Not Shown)
5.	626-200039	Adjusting Spring Lock Plate Assembly
6.	626-300385	Clean Out Door
7 a.	900-4910-73	5/16"-18NC Hex Nut
b.	900-4906-47	5/16" Lock Washer
c.	900-4906-48	5/16" Flat Washer
8.	626-300106	Hood Flange
9.	626-300401	Bottom Swivel Ring
10 a.	900-4910-54	Discharge Transport Bolt - 3/8"-16NC x 1 1/2" (Not Shown)
b.	900-4906-60	Discharge Transport Nut - 3/8"-16NC (Not Shown)

DISCHARGE ASSEMBLIES

LOCATION	PART NUMBER	DESCRIPTION
1.	626-200016	Standard Discharge Assembly
2.	626-200041	Hand Crank And Adjustable Height Discharge Assembly
3.	626-200042	Hand Crank Discharge Assembly
4.	626-200015	Adjustable Height Discharge Assembly

NOTICE Parts may not be exactly as shown.

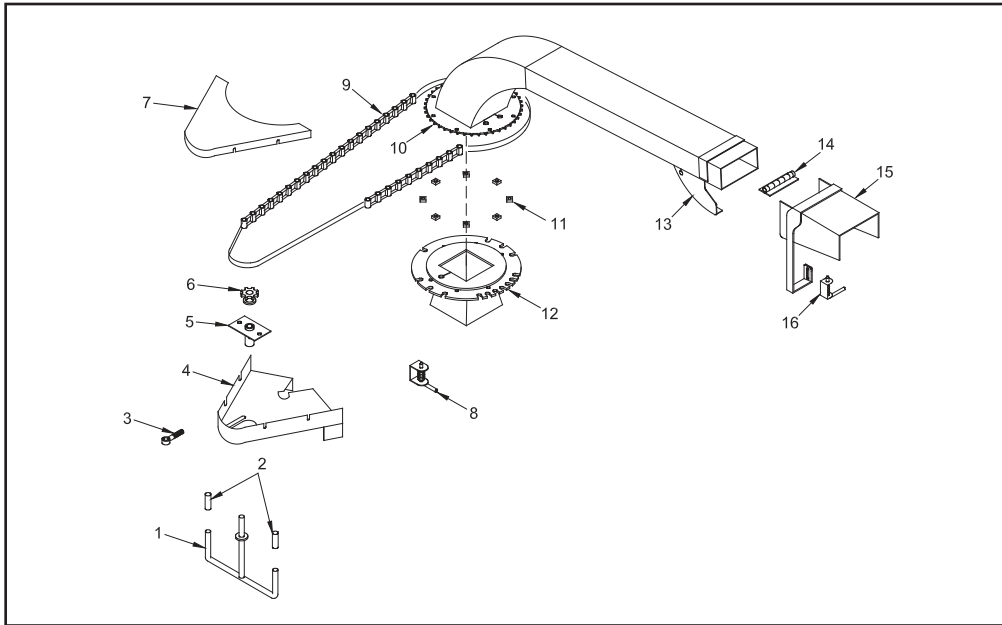
HAND CRANK ADJUSTABLE HEIGHT DISCHARGE



LOCATION	PART NUMBER	DESCRIPTION
1.	980-0510-86	Hand Crank For Adj. Height Discharge - Mounted On The Side
2.	626-300157	Rubber Discharge Guard
3.	626-300201	Hand Crank Adj. Height Hinge Pin
4.	626-300114	Discharge Flipper Hinge
5 a.	626-200037	12" Discharge Flipper Assembly (Includes 10 & 12)
b.	626-200038	12" Enclosed Discharge Flipper Assembly (Includes 10 & 12)
6 a.	900-4901-83	Discharge Flipper Adjusting Spring
b.	900-7900-93	Black Rubber Cap (Not Shown)
7.	626-200039	Adjusting Spring Lock Plate Assembly
8 a.	900-4910-54	Discharge Transport Bolt - 3/8"-16NC x 1 1/2" (Not Shown)
b.	900-4906-60	Discharge Transport Nut - 3/8"-16NC (Not Shown)

NOTICE Parts may not be exactly as shown.

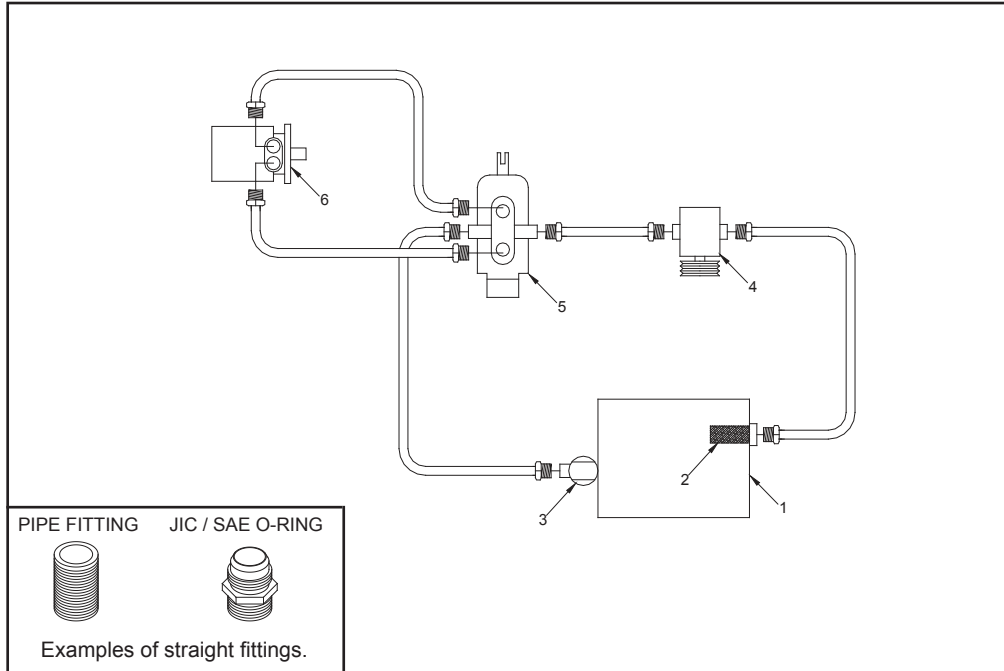
HAND CRANK SWIVEL DISCHARGE



LOCATION	PART NUMBER	DESCRIPTION
1.	937-200064	T-Handle Assembly
2.	900-7900-96	Rubber Cap
3.	900-4905-43	Eye Bolt Adjuster For Hand Crank Swivel Discharge
4.	626-300325	Bottom Chain Guard - Rounded Style
5 a.	626-200097	Chain Adjuster Assembly
b.	900-1909-36	Bushing Only
6 a.	900-1905-59	T-Handle Sprocket
b.	980-0125-82	Key For Sprocket (Not Shown)
7.	626-300326	Steel Top Chain Guard - Rounded Style
8.	900-4901-83	Spring Plunger
9 a.	900-1901-20	#50 Roller Chain
b.	900-1901-18	Half Link - Chain (Not Shown)
c.	900-1901-19	Master Link - Chain (Not Shown)
10.	626-300193	Sprocket For Hand Crank Swivel Discharge (Weld On)
11.	900-4905-00	Spacer Block
12.	626-300107	Bottom Swivel Ring
13.	626-200039	Adjusting Spring Lock Plate Assembly
14.	626-300114	Discharge Flipper Hinge
15 a.	626-200037	12" Discharge Flipper Assembly (Includes 14 & 16)
b.	626-200038	12" Enclosed Discharge Flipper Assembly (Includes 14 & 16)
16 a.	900-4901-83	Discharge Flipper Adjusting Spring
b.	900-7900-93	Black Rubber Cap (Not Shown)
17 a.	900-4910-54	Discharge Transport Bolt - 3/8"-16NC x 1 1/2" (Not Shown)
b.	900-4906-60	Discharge Transport Nut - 3/8"-16NC (Not Shown)

NOTICE Parts may not be exactly as shown.

SINGLE FEEDWHEEL HYDRAULIC SCHEMATIC (WITH NO OPTIONS)



LOCATION	PART NUMBER	DESCRIPTION
1.	See Pages 104-105	Hydraulic Tank
2.	900-3900-07	Hydraulic Tank Strainer
3 a.	900-3900-09	Filter Head
b.	900-3900-10	Filter
4.	**	Hydraulic Pump
5.	900-3920-06A	Feedwheel Control Valve With Relief - SAE O-ring
6.	900-3927-67	Feedwheel Hydraulic Motor (Tapered Shaft)

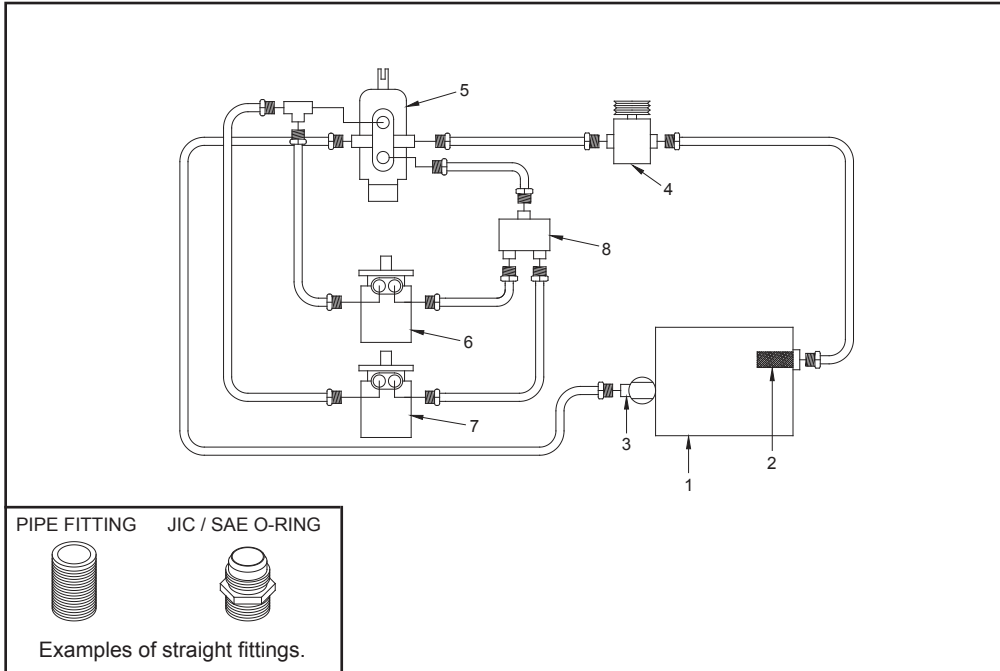
** Hydraulic components, fittings, hoses will vary depending on optional equipment. Order by physical description.

** Hydraulic pumps need to be ordered by physical description and serial number of machine.

NOTICE Make sure to order components according to fitting type, fittings may vary on all components.

NOTICE Parts may not be exactly as shown.

DUAL FEEDWHEEL HYDRAULIC SCHEMATIC (WITH NO OPTIONS)



LOCATION	PART NUMBER	DESCRIPTION
1.	See Pages 104-105	Hydraulic Tank
2.	900-3900-07	Hydraulic Tank Strainer
3 a.	900-3900-09	Filter Head
b.	900-3900-10	Filter
4.	**	Hydraulic Pump
5.	900-3920-06A	Feedwheel Control Valve With Relief - SAE O-ring
6.	900-3927-67	Top Feedwheel Hydraulic Motor
7.	900-3944-21	Bottom Feedwheel Hydraulic Motor
8.	See Pages 96-97	Flow Divider

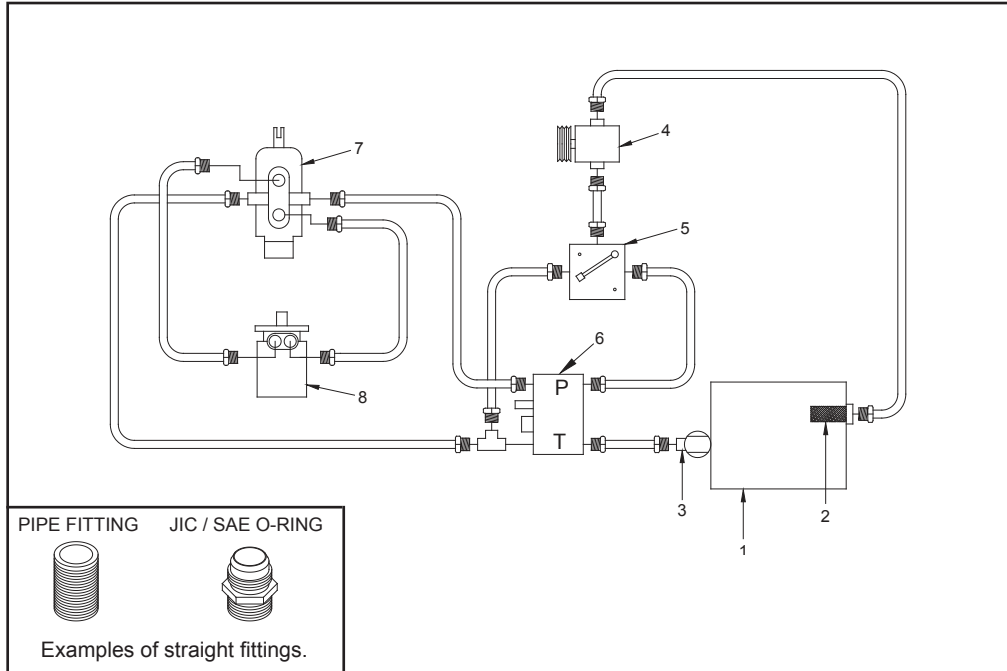
** Hydraulic components, fittings, hoses will vary depending on optional equipment. Order by physical description.

** Hydraulic pumps need to be ordered by physical description and serial number of machine.

NOTICE Make sure to order components according to fitting type, fittings may vary on all components.

NOTICE Parts may not be exactly as shown.

SINGLE FEEDWHEEL HYDRAULIC SCHEMATIC (WITH AUTOFEED & FLOW CONTROL)



LOCATION	PART NUMBER	DESCRIPTION
1.	See Pages 104-105	Hydraulic Tank
2.	900-3900-07	Hydraulic Tank Strainer
3 a.	900-3900-09	Filter Head
b.	900-3900-10	Filter
4.	**	Hydraulic Pump
5.	900-3924-56	Variable Speed Flow Control Valve - SAE O-ring
6.	See Page 95	Autofeed Block
7.	900-3920-05	Feedwheel Control Valve Without Relief - SAE O-ring
8.	900-3927-67	Feedwheel Hydraulic Motor
9 a.	980-100121	In-Line Pressure Check Kit - With Autofeed (Not Shown)
b.	980-100122	In-Line Pressure Check Kit - Without Autofeed (Not Shown)

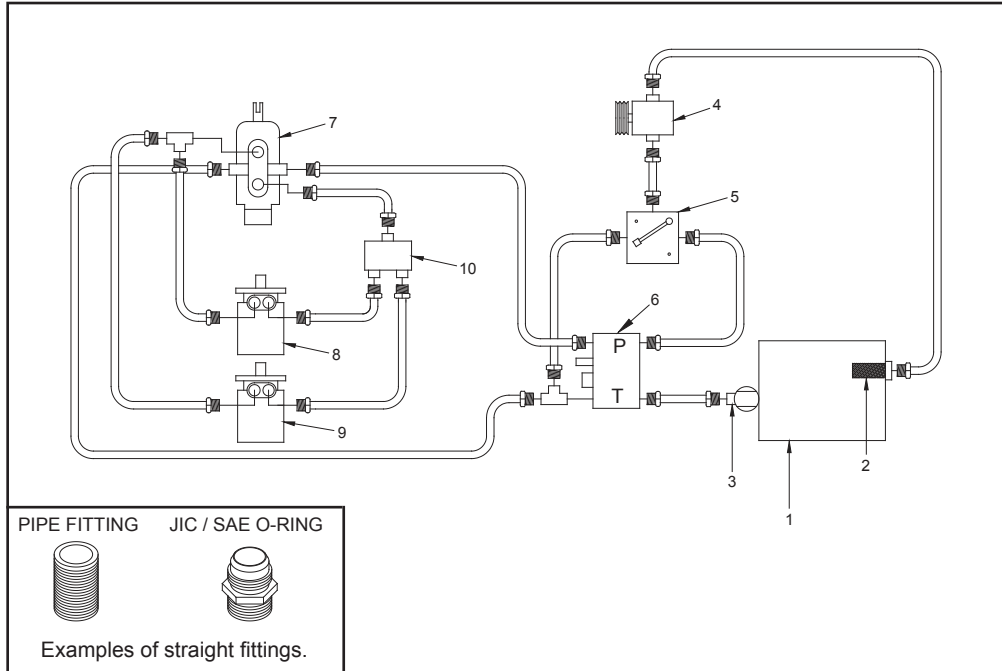
** Hydraulic components, fittings, hoses will vary depending on optional equipment. Order by physical description.

** Hydraulic pumps need to be ordered by physical description and serial number of machine.

NOTICE Make sure to order components according to fitting type, fittings may vary on all components.

NOTICE Parts may not be exactly as shown.

DUAL FEEDWHEEL HYDRAULIC SCHEMATIC (WITH AUTOFEED & FLOW CONTROL)



LOCATION	PART NUMBER	DESCRIPTION
1.	See Pages 104-105	Hydraulic Tank
2.	900-3900-07	Hydraulic Tank Strainer
3 a.	900-3900-09	Filter Head
b.	900-3900-10	Filter
4.	**	Hydraulic Pump
5.	900-3924-56	Variable Speed Flow Control Valve - SAE O-ring
6.	See Page 95	Autofeed Block
7.	900-3920-05	Feedwheel Control Valve Without Relief - SAE O-ring
8.	900-3927-67	Top Feedwheel Hydraulic Motor
9.	900-3944-21	Bottom Feedwheel Hydraulic Motor
10.	See Pages 96-97	Flow Divider
11 a.	980-100121	In-Line Pressure Check Kit - With Autofeed (Not Shown)
b.	980-100122	In-Line Pressure Check Kit - Without Autofeed (Not Shown)

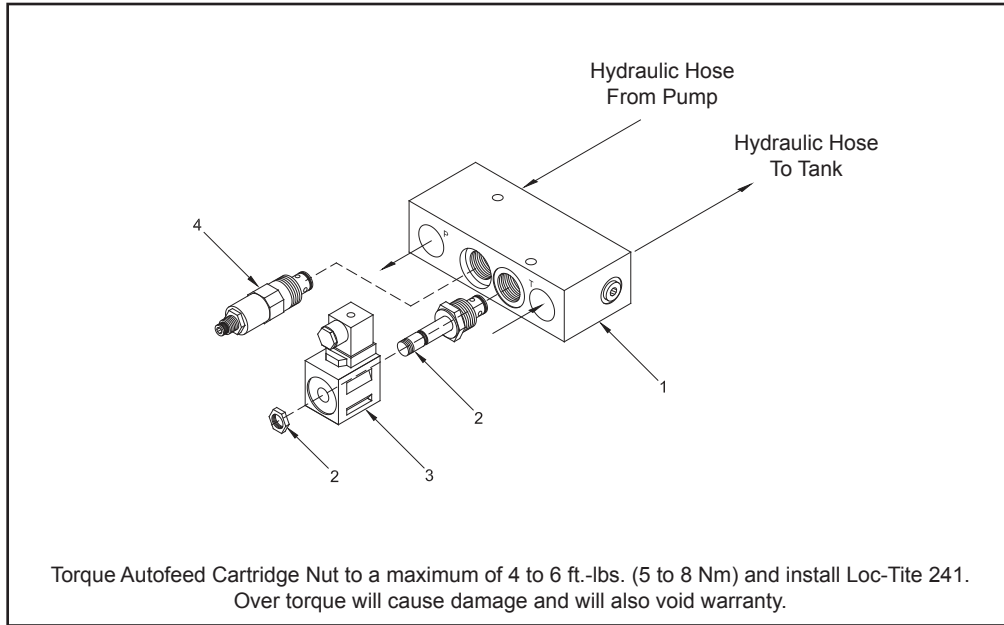
** Hydraulic components, fittings, hoses will vary depending on optional equipment. Order by physical description.

** Hydraulic pumps need to be ordered by physical description and serial number of machine.

NOTICE Make sure to order components according to fitting type, fittings may vary on all components.

NOTICE Parts may not be exactly as shown.

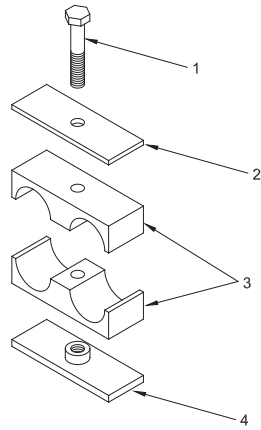
AUTOFEED BLOCK



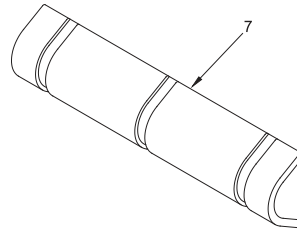
LOCATION	PART NUMBER	DESCRIPTION
1.	N/A	Autofeed Block Only
2.	900-3923-43	Autofeed Cartridge Only
3.	900-3923-44	12 Volt Autofeed Solenoid Only
4	900-3919-96	Main Relief Only (Danfoss)
	900-3908-23	Main Relief Only (Vickers)
5	900-3923-45	Autofeed Block Assembly With Relief
	900-3923-37	Autofeed Block Assembly Without Relief

NOTICE Parts may not be exactly as shown.

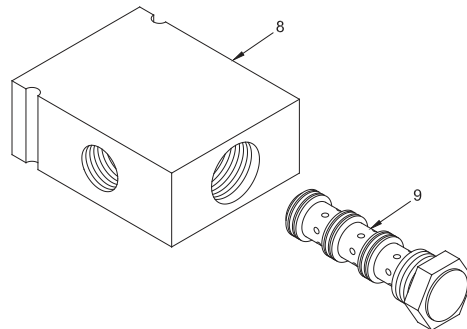
HOSE CLAMP



HOSE GUARD



FLOW DIVIDER - ONLY ON MACHINES WITH DUAL FEEDWHEELS



NOTICE Parts may not be exactly as shown.

HOSE CLAMP

LOCATION	PART NUMBER	DESCRIPTION
1.	N/A	Bolt
2.	N/A	Locking Plate
3.	N/A	Plastic Clamp
4		
a.	900-3914-09	Weld Plate for 1/4" Double Clamp
b.	900-3914-08	Weld Plate for 1/2" Double Clamp
c.	900-3926-47	Weld Plate for 3/4" Double Clamp
5		
a.	900-3917-25	1/4" Double Clamp Assembly (Includes #'s 1-4)
b.	900-3926-44	3/8" Double Clamp Assembly (Includes #'s 1-4)
c.	900-3928-19	1/2" Single Clamp Assembly (Includes #'s 1-4)
d.	900-3914-02	1/2" Single Clamp Assembly For Steel Lines (Includes #'s 1-4)
e.	900-3915-61	1/2" Double Clamp Assembly (Includes #'s 1-4)
f.	900-3913-32	1/2" Double Clamp Assembly For Steel Lines (Includes #'s 1-4)
g.	900-3914-03	3/4" Single Clamp Assembly (Includes #'s 1-4)
h.	900-3914-07	3/4" Double Clamp Assembly (Includes #'s 1-4)
i.	900-3914-04	1" Single Clamp Assembly (Includes #'s 1-4)
j.	900-3914-05	1 1/4" Single Clamp Assembly (Includes #'s 1-4)
k.	900-3914-06	1 1/2" Single Clamp Assembly (Includes #'s 1-4)
6		
a.	900-3914-10	Stacking Bolt for 1/2" Double Clamp (Not Shown)
b.	900-3920-11	Stacking Bolt for 3/4" Double Clamp (Not Shown)

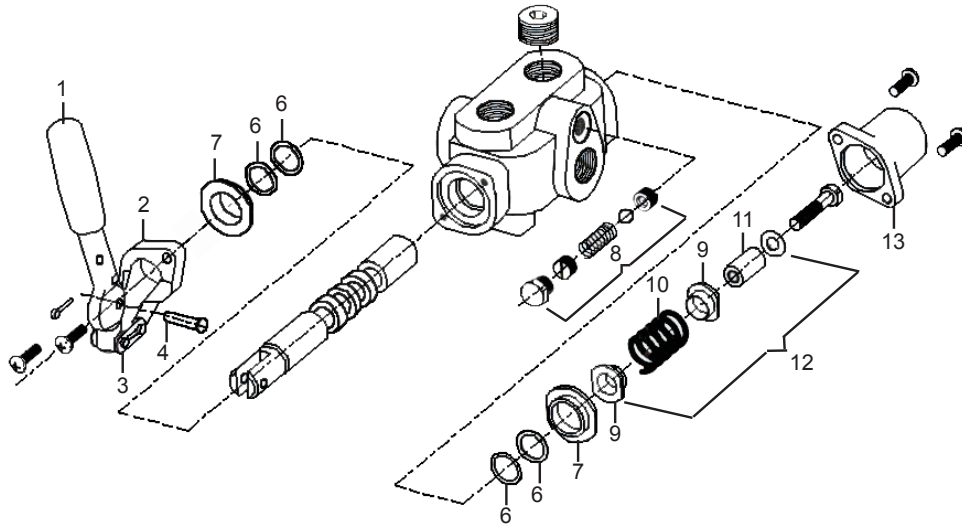
HOSE GUARD

LOCATION	PART NUMBER	DESCRIPTION
7		
a.	900-3934-76	Hose Guard - 4" Long
b.	900-3934-77	Hose Guard - 6" Long
c.	900-3934-78	Hose Guard - 8" Long

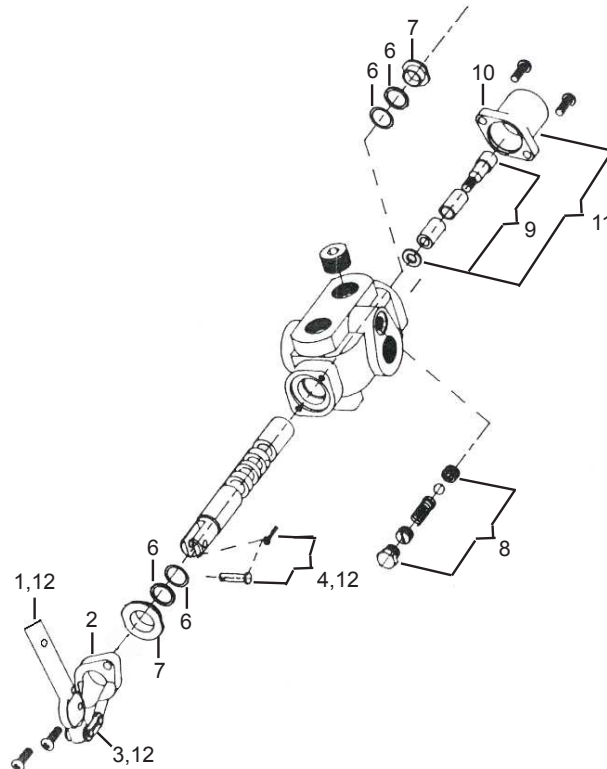
FLOW DIVIDER - ONLY ON MACHINES WITH DUAL FEEDWHEELS

LOCATION	PART NUMBER	DESCRIPTION
8.	900-3923-35	Flow Divider Body With Cartridge - SAE O-Ring
9.	900-3923-36	Flow Divider Cartridge Only - SAE O-Ring

TYPICAL SPRING LOADED CONTROL VALVE



TYPICAL FEEDWHEEL CONTROL VALVES



NOTICE Parts may not be exactly as shown.

TYPICAL SPRING LOADED CONTROL VALVE COMPONENTS

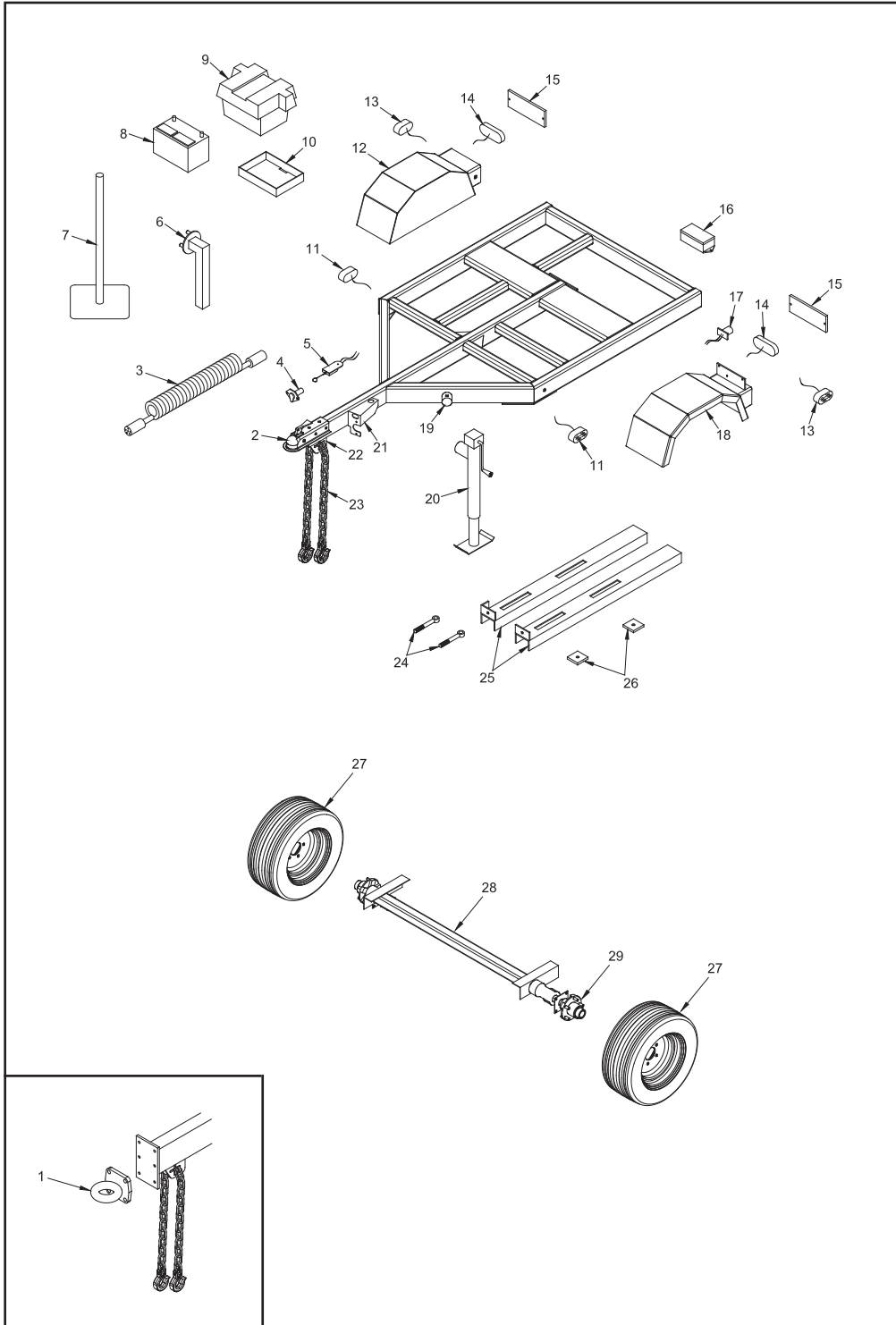
LOCATION	PART NUMBER	DESCRIPTION
1.	904-0003-29	Handle Only (Long)
2.	900-3905-95	Valve Bracket Only With Screws
3.	904-0003-30	Master Link Only Control Valve
4.	904-0003-31	Pin And Cotter Key For Control Valve
5.	904-0003-32	Bracket, Handle And Chain Link NOTE: INCLUDES #'s 1, 2, 3, 4
6.	900-3937-34	Seal Kit For Control Valve
7.	904-0003-33	Seal Retainer For Control Valve NOTE: NOT INCLUDED IN SEAL KIT
8.	900-3901-12	Relief Valve Kit - Spring, Ball, Screw NOTE: SOLD ONLY AS A KIT
9.	904-0003-34	Valve Spool Stop For Spring Loaded Valve
10.	904-0003-35	Valve Spool Spring
11.	904-0003-36	Valve Spacer For Yoke Lift Valve
12.	900-A-2941	Spring Center Kit For Spring Loaded Valve
13.	904-0003-37	Detent Cap Only For Spring Loaded Valve (Short)

TYPICAL FEEDWHEEL CONTROL VALVE COMPONENTS

LOCATION	PART NUMBER	DESCRIPTION
1.	900-3905-95H	Handle Only (Short)
2.	900-3905-95	Valve Bracket Only With Screws
3.	904-0003-30	Master Link Only Control Valve
4.	904-0003-31	Pin And Cotter Key For Control Valve
5.	904-0003-32	Bracket, Handle And Chain Link NOTE: INCLUDES #'s 1, 2, 3, 4
6.	900-3937-34	Seal Kit For Control Valve
7.	904-0003-33	Seal Retainer For Control Valve NOTE: NOT INCLUDED IN SEAL KIT
8.	900-3901-12	Relief Valve Kit - Spring, Ball, Screw NOTE: SOLD ONLY AS A KIT
9.	900-3900-71	Detent Kit For Feedwheel Control Valve NOTE: SOLD ONLY AS A KIT
10.	900-390071C	Detent Cap Only With Screws (Long)
11.	900-3900-71E	Detent Kit With Cap And Screws NOTE: INCLUDES #'s 9 & 10
12.	900-3905-59	Handle, Pin, and Link NOTE: INCLUDES #'s 1, 3, & 4

CONTROL VALVES

LOCATION	PART NUMBER	DESCRIPTION
1.	900-3927-73	Yoke Lift Control Valve for Dual Control Yoke Lift
2.	900-3920-01	Winch, Hyd. Swivel Discharge, and Tongue Jack
3.	900-3920-06A	Feedwheel Control Valve With Relief
4.	900-3920-05A	Feedwheel Control Valve With Out Relief



NOTICE Parts may not be exactly as shown.

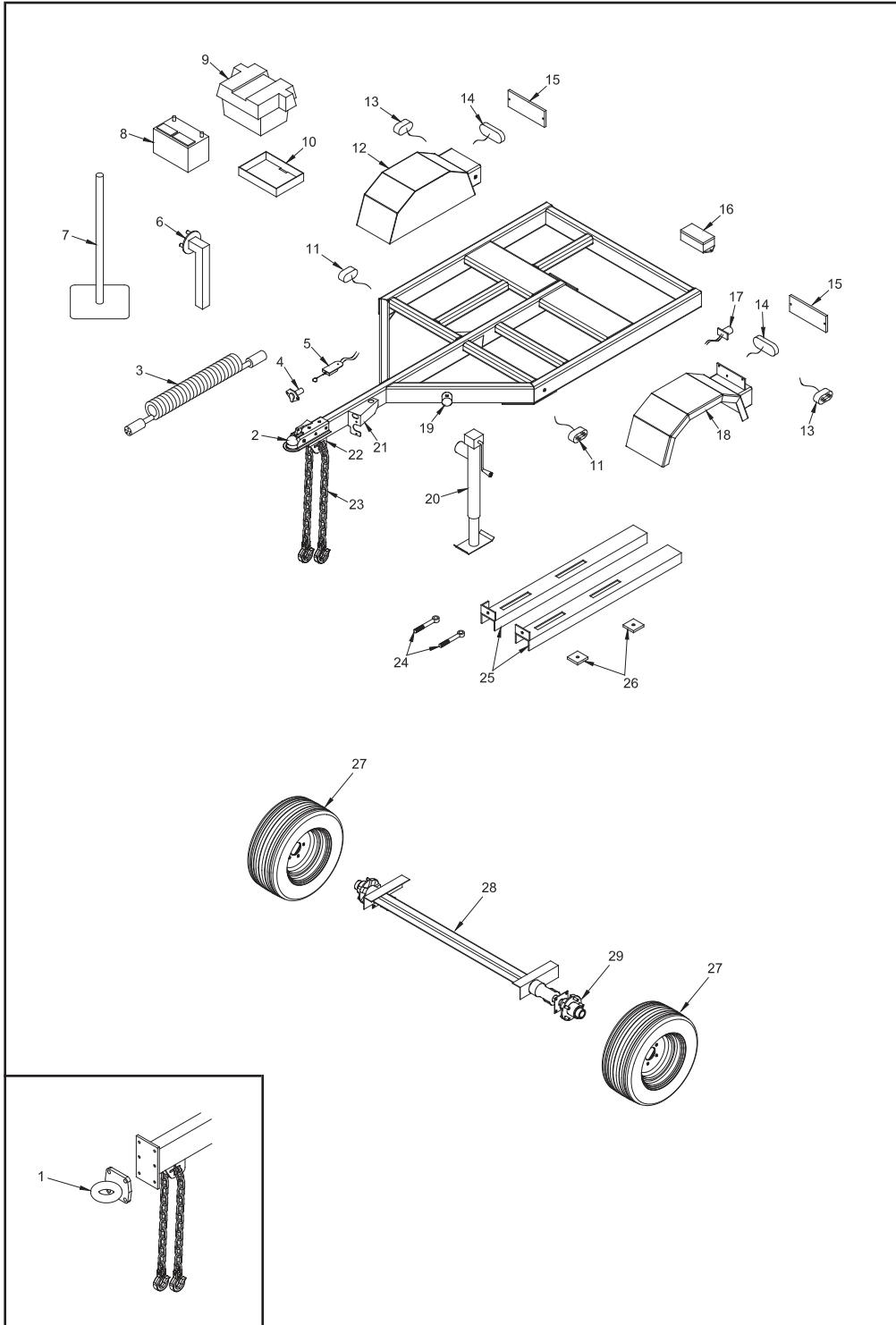
MODEL 75**FRAME & ACCESSORY COMPONENTS**

LOCATION	PART NUMBER	DESCRIPTION
1 a.	900-5900-13	2 1/2" Heavy Duty Pintle Ring Hitch
b.	980-0501-47	2" Ball Coupler Assembly (Not Shown)
c.	980-0505-33	2 5/16" Ball Coupler Assembly (Not Shown)
d.	*-*	Other Hitch Options Available (Not Shown)
2 a.	900-5904-67	2" Ball Bolt-On Hitch Single Position (Bolts directly on tongue)
b.	900-5901-45	2" Ball Coupler (Croft - Optional) (Not Shown)
c.	900-5901-46	2 1/2" Pintle Ring (Croft - Optional) (Not Shown)
3 a.	900-2916-63	Coil Cable Assembly With 6 Prong Plugs - 15'
b.	900-2904-12	6-Prong Trailer Plug Male Plug Only
4.	900-2904-13	6-Prong Trailer Plug Female Plug Only
5.	900-5900-09	Electrical Breakaway Switch
6.	980-0510-51	Optional Spare Tire Mount
7 a.	980-200202	Optional Cone Holder (Replaces 980-0508-30)
b.	980-200215	Optional Bolt-On Cone Holder (Not Shown)
c.	980-200107	Optional Hoop Style Cone Holder (Not Shown)
d.	900-7900-86	Cap For Cone Holder (Not Shown)
8.	900-6900-01	530 CCA Battery
9.	900-7900-01	Plastic Battery Liner Box for 530 CCA Battery
10.	626-0001-70	Battery Box Tray
11 a.	900-2915-97	LED Amber Marker Light - Rectangle
b.	900-2924-50	LED Amber Marker Light - 3/4" Round
12 a.	626-200022	Right Hand Steel Weld-On Fender
b.	626-200046	Right Hand H.D. Aluminum Fender
c.	626-200072	Right Hand Steel Weld-On Fender For 185R-14" Tire
d.	986-0502-11	Right Hand H.D. Aluminum Fender For 185R-14" Tire
13 a.	900-2915-98	LED Red Marker Light - Rectangle
b.	900-2924-49	LED Red Marker Light - 3/4" Round
14.	900-2910-43	LED Tail Light
15.	901-300007	Heavy Duty Tail Light Cover
16.	900-2902-41	Junction Box for Wiring
17.	900-2900-07	License Plate Light
18 a.	626-200023	Left Hand Steel Weld-On Fender
b.	626-200047	Left Hand H.D. Aluminum Fender
c.	626-200073	Left Hand Steel Weld-On Fender For 185R-14" Tire
d.	986-0502-11	Left Hand H.D. Aluminum Fender For 185R-14" Tire
19 a.	910-1001-29	Pivot Mount For 2,000 Lbs. Jack - Round Mount
b.	910-1001-29	Pivot Mount For 1,000 Lbs. Castor Wheel Jack - Round Mount
c.	900-5905-71	Pivot Mount For 5,000 Lbs. Jack - Square Mount
20 a.	900-5906-10	2,000 Lbs. Side Crank Jack - Zinc (Replaces 900-5903-79)
b.	900-5902-42	1,000 Lbs. Steel Castor Wheel Jack - Round Mount
c.	900-5908-44	5,000 Lbs. Side Crank Jack-Zinc-Square Mnt (Replaces 900-5903-86)
d.	980-1002-11	5,000 Lbs. Jack With HD Castor Wheel - Zinc - Square Mount
21.	980-300106	Trailer Plug Receptacle Mount

** Order Brake Hub And Drum Assembly According To Axle Type.
(Grease Type, Oil Type, Never Lube Type).

- Engine Rails And Adjusters Will Vary Depending On Engine And Component Options.
Order By Serial Number Of Chipper Or Physical Description.

NOTICE Other fenders and fender stone shields are optional.



NOTICE Parts may not be exactly as shown.

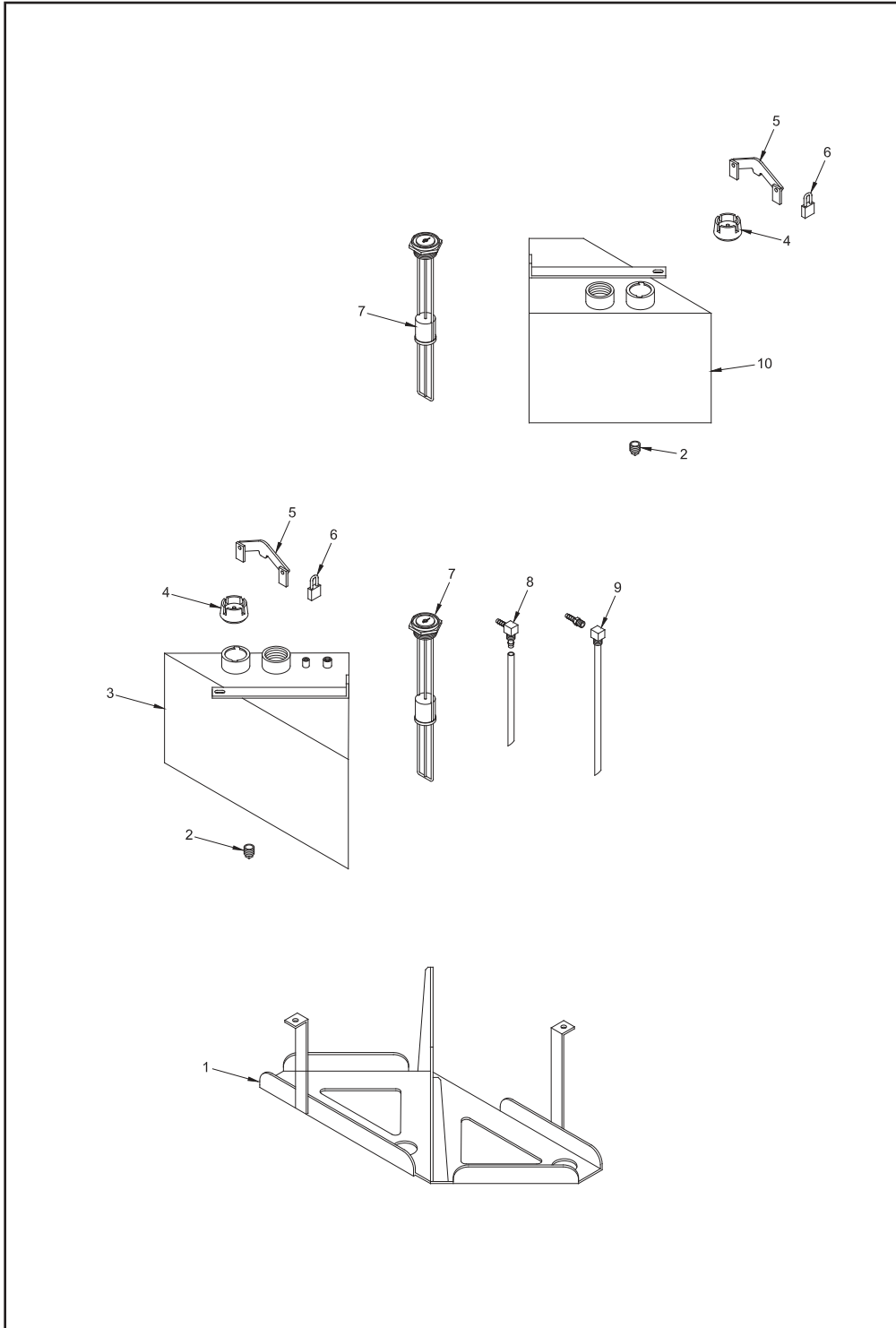
MODEL 75**FRAME & ACCESSORY COMPONENTS**

LOCATION	PART NUMBER	DESCRIPTION
22.	922-0003-87	Safety Chain Holder
23 a.	900-4912-36	Safety Chain With Hooks and Spring Latches for Standard Tongue
b.	900-4913-11	Hook For Safety Chain
24 a.	900-4902-73	Engine Adjuster Rod End - 1/2"-13NC x 5 1/2" (Kohler, Hatz, Vanguard)
b.	900-4902-29	Engine Adjuster Rod End - 1/2"-13NC x 6" (Caterpillar, Kubota)
25 a.	*_*	Engine Rails / Engine Slide Mount
b.	626-100050	Engine Oil Drain Hose Kit- Vanguard (Not Shown)
c.	626-100048	Engine Oil Drain Hose Kit - Kohler (Not Shown)
26 a.	922-0003-38	Engine Mount Pad For 1/2" Engine Hold Down (Kohler, Hatz, Vanguard)
b.	980-0101-33	Engine Mount Pad For 5/8" Engine Hold Down (Caterpillar, Kubota)
27 a.	900-5905-90	20.5" x 8" x 10" Tire And White, 5-Bolt Rim
b.	900-5905-88	20.5" x 8" x 10" Tire Only
c.	900-5905-89	10" White, 5-Bolt Rim Only
d.	900-5903-09	185R-14" Tire And White, 5-Bolt Rim
e.	900-5903-08	185R-14" Tire Only
f.	900-5903-06	14" x 6" White, 5-Bolt Rim Only
28 a.	900-5905-83	2,200 Lb. Torflex Axle Assembly (No Brake)
b.	900-5905-82	2,200 Lb. Torflex Axle Assembly (Electric Brake)
c.	900-5905-85	3,500 Lb. Torflex Axle Assembly (No Brake)
d.	900-5905-84	3,500 Lb. Torflex Axle Assembly (Electric Brake)
e.	900-5908-55	3,500 Lb. Torflex Axle Assembly (Electric Brake & Parking Brake)
29.	**	Brake Hub and Drum Assembly
30 a.	980-0508-25	Optional Wheel Chock Holders Aluminum Bolt-On (Not Shown)
b.	980-0508-26	Optional Wheel Chock Holders Metal Weld-On (Not Shown)
31.	900-5902-32	Optional Rubber Wheel Chock (Not Shown)
32.	900-5904-52	Optional Safety Marker For Fenders (Not Shown)
33.	900-7900-48	Optional Mud Flap (Not Shown)
34 a.	900-9904-94	Optional Vice (Not Shown)
b.	980-300113	Optional Weld-On Vice Mount (Not Shown)

** Order Brake Hub And Drum Assembly According To Axle Type.
(Grease Type, Oil Type, Never Lube Type).

_ Engine Rails And Adjusters Will Vary Depending On Engine And Component Options.
Order By Serial Number Of Chipper Or Physical Description.

NOTICE Other fenders and fender stone shields are optional.



NOTICE Parts may not be exactly as shown.

MODEL 75**FUEL & HYDRAULIC TANK COMPONENTS**

LOCATION	PART NUMBER	DESCRIPTION
1 a.	626-200024	Tank Mount Tray - 8 Gallon Fuel Tank & 7 Gallon Hydraulic Tank
b.	626-200049	Tank Mount Tray - 12 Gallon Fuel Tank & 7 Gallon Hydraulic Tank
c.	900-0104-95	Rubber Tank Pad (Not Shown)
2.	900-3922-60	Magnetic Drain Plug
3 a.	626-200013	8 Gallon Fuel Tank Assembly
b.	626-200048	12 Gallon Fuel Tank Assembly
4 a.	900-3901-51	Fill Cap With Dipstick (Steel Tank)
b.	900-3917-71	Fill Cap Only No Dipstick (Steel Tank)
c.	900-3941-31	Fuel (Diesel) Locking Fill Cap - Green
d.	900-3941-30	Fuel (Gasoline) Locking Fill Cap - Black
e.	900-3941-30	Hydraulic Locking Fill Cap - Black
f.	900-3935-06	Keeper For Fuel & Hydraulic Locking Fill Cap (Not Shown)
5.	980-0506-85	Fill Cap Lock Assembly For Steel Tank
6 a.	900-4912-40	Padlock With Short Shackle For Tank With Locking Cap
b.	P812	Key For Padlock (Not Shown)
7 a.	900-2903-93	Optional Rochester Sight Gauge For 8 Gal. Fuel Tank & 7 Gal. Hydraulic Tank
b.	900-2903-94	Optional Rochester Sight Gauge For 12 Gallon Fuel Tank
c.	900-2903-55	Face For Sight Gauge Only
8 a.	900-3908-77	Return 1/4" NPTF Elbow 1/4" Hose Barb x 1/4" Hose Barb
b.	900-3936-69	Return 1/4" NPTF Elbow 3/16" Hose Barb x 1/4" Hose Barb
c.	900-3909-03	1/4" ID Drop Pipe Only
9 a.	900-3909-00	Suction Drop Pipe Ass'y Without Hose Barb (3/8" NPTF Male x 1/4" NPTF Female)
b.	900-3925-48	1/4" NPTF To 3/8" Hose Barb
c.	900-3909-01	1/4" NPTF To 5/16" Hose Barb
d.	900-3909-02	1/4" NPTF To 1/4" Hose Barb
e.	900-3943-22	3/16" NPTF To 3/16" Hose Barb
f.	900-3943-21	1/4" NPTF To 3/16" NPTF Bushing
10.	626-200018	7 Gallon Hydraulic Tank Assembly

NOTICE Components vary with fuel type. Specify gas or diesel when ordering fuel tank components.

NOTICE Tank assemblies vary with options. Specify all options when ordering.

